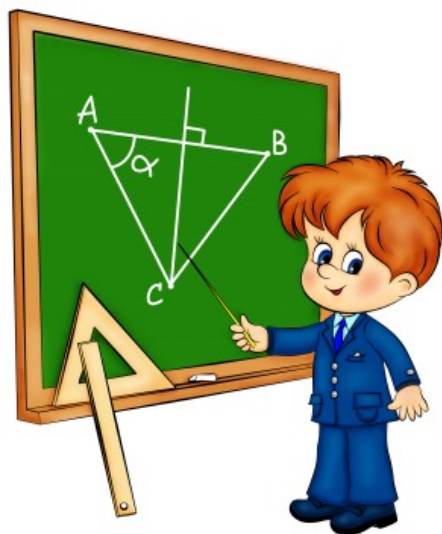


# Глагол to be/the verb «to be»

- Глагол **be** называют глаголом-связкой, потому что он не выражает никакого действия, его задача: «связать» слова в предложении:
  - Я ученик – I am a pupil
  - Я спортсмен - I am a sportsman





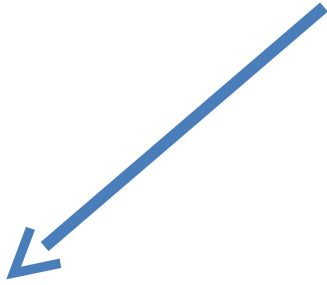
# Глагол to be - «глагол-король»

- Перевод: быть, являться, находиться

- В настоящем времени глагол to be имеет три формы: *am*, *is*, *are*



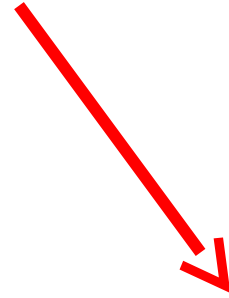
to be



*am*



*is*



*are*

# Глагол-связка меняется в зависимости от местоимения

I

Am

He/she/it

Is

You/we/they

Are



Affirmative		Negative		Interrogative
Long form	Short Form	Long	Short Form	
I am	I'm	I am not	I'm not	Am I?
You are	You're	You are not	You aren't	Are you?
He is	He's	He is not	He isn't	Is he?
She is	She's	She is not	She isn't	Is she?
It is	It's	It is not	It isn't	Is it?
We are	We're	We are not	We aren't	Are we?
You are	You're	You are not	You aren't	Are you?
They are	They're	They are not	They aren't	Are they?

Глагол – связка помогает строить предложения,  
связывать слова между собой.

Полная форма – утвердительные предложения(+):

□ I *am* nice. – Я красивый.

□ You *are* nice. – Ты красивый/Вы красивый/Вы красивые.

□ He *is* nice. – Он красивый.

□ She *is* nice. – Она красивая.

□ It *is* nice. – Он (она, оно) красивый(ая, ое).

□ We *are* nice. – Мы красивые.

□ They *are* nice. – Они красивые.

## Краткая форма – утвердительные предложения(+):

- I **am** nice. – **I'm** nice.
- You **are** nice. – **You're** nice.
- He **is** nice. – **He's** nice.
- She **is** nice. – **She's** nice.
- It **is** nice. – **It's** nice.
- We **are** nice. – **We're** nice.
- They **are** nice. – **They're** nice.

1 Write as in the example.

## Long Form

- 1 It *is* ..... a doll.
- 2 They ..... are ..... dancers.
- 3 He ..... is ..... a teacher.
- 4 We ..... are ..... girls.
- 5 I ..... am ..... Tony.
- 6 She ..... is ..... a singer.

## Short Form

- 1 It *'s* ..... a doll.
- 2 They ..... 're ..... dancers.
- 3 He ..... 's ..... a teacher.
- 4 We ..... 're ..... girls.
- 5 I ..... 'm ..... Tony.
- 6 She ..... 's ..... a singer.



Поставъте вместо пропусков – **am/is/are**:

- |                                |                                     |
|--------------------------------|-------------------------------------|
| 1) You _____ nice.             | 1) You <b>are</b> nice.             |
| 2) I _____ tall.               | 2) I <b>am</b> tall.                |
| 3) Ann _____ smart.            | 3) Ann <b>is</b> smart.             |
| 4) Tim _____ brave.            | 4) Tim <b>is</b> brave.             |
| 5) Tom and Bill _____ friends. | 5) Tom and Bill <b>are</b> friends. |
| 6) The dog _____ black.        | 6) The dog <b>is</b> black.         |
| 7) The house _____ big.        | 7) The house <b>is</b> big.         |
| 8) Alex and I _____ pupils.    | 8) Alex and I <b>are</b> pupils.    |
| 9) The cat _____ white.        | 9) The cat <b>is</b> white.         |
| 10) The pens _____ blue.       | 10) The pens <b>are</b> blue.       |

**2** Fill in: *am, is or are*.

1 I *am* ... a dancer and  
you *are* ... a singer.



2 We *are* ... football players  
and they *are* ... tennis players.



3 He *is* ... a mechanic and  
she *is* ... an engineer.



4 I *am* ... a firefighter and  
he *is* ... a policeman.



5 You *are* ... a policeman  
and I *am* ... a nurse.



6 We *are* ... pupils and  
you *are* ... students.



7 I ... am ... a bus driver and  
you ... are ... a postman.



8 I ... am ... a pilot and he  
... is ... an astronaut.



9 I ... am ... a doctor and  
he ... is ... a teacher.



3 Match column A with column B, then write the sentences.

(A)	(B)
1 I am a	A a box
2 He is	B Mary
3 It is	C Jim
4 She is	D pupil
5 We are	E singers

*Matching arrows: 1 to D, 2 to C, 3 to A, 4 to B, 5 to E.*

*I am a pupil.*  
 He is Jim.  
 It is a box.  
 She is Mary.  
 We are singers.

## отрицательные предложения(-)

- I am not = I'm not
- is not = isn't
- are not = aren't

***НЕ***

❑ I'm not tall – Я не высокий.

❑ She isn't tall – Она не высокая.

❑ They aren't tall – Они не высокие.

## Полная форма – отрицательные предложения(-):

☐ I *am not* tall. – Я не высокий.

☐ You *are not* tall. – Ты высокий /Вы высокий /Вы высокие.

☐ He *is not* tall. - Он высокий.

☐ She *is not* tall. – Она высокая.

☐ It *is not* tall. – Он (она, оно) высокий(ая, ое).

☐ We *are not* tall. – Мы высокие.

☐ They *are not* tall. – Они высокие.

## Краткая форма – отрицательные предложения(-):

- ❑ I *am not* tall. – I *'m not* tall.
- ❑ You *are not* tall. - You *aren't* tall.
- ❑ He *is not* tall. - He *isn't* tall.
- ❑ She *is not* tall. – She *isn't* tall.
- ❑ It *is not* tall. – It *isn't* tall.
- ❑ We *are not* tall. – We *aren't* tall.
- ❑ They *are not* tall. – They *aren't* tall.

**4** Fill in: *'m not*, *isn't* or *aren't*.

- 1 I ..... *'m not* ..... a teacher.
- 2 You ..... *aren't* ..... an engineer.
- 3 We ..... *aren't* ..... dancers.
- 4 He ..... *isn't* ..... a bus driver.

- 5 She ..... *isn't* ..... an astronaut.
- 6 I ..... *'m not* ..... a student.
- 7 They ..... *aren't* ..... postmen.
- 8 It ..... *isn't* ..... a dog.



5

Fill in the pronoun *I, he, she, it, we, they* with *'m not, isn't or aren't*.



1 *He isn't* a policeman.  
He is a singer.



2 *I'm not* a teacher.  
*I'm* a doctor.



3 *He isn't* a postman.  
*He's* a pilot.



4 *They aren't* firefighters.  
*They are* policemen.

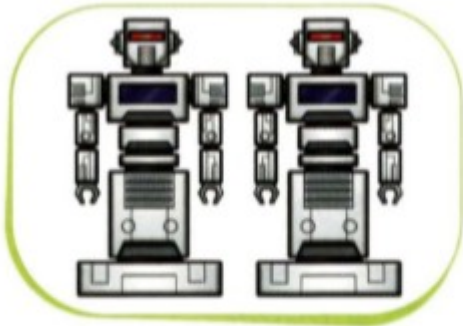


5 *She isn't* an engineer.  
*She's* a teacher.



6 *We aren't* singers.  
*We are* doctors.





7 They aren't balloons.  
They are robots.



8 It isn't a fox.  
It's a penguin.



9 She isn't a teacher.  
She is a nurse.

В вопросительных предложениях «am, is, are» ставится ПЕРЕД подлежащим (?):

☐ *Am* I nice?

☐ *Is* he nice?

☐ *Is* she nice?

☐ *Is* it nice?

☐ *Are* we nice?

☐ *Are* you nice?

☐ *Are* they nice?

**6** Fill in: *Am, Is* or *Are*.

- 1 ..... *Are* ..... you a pupil?
- 2 ..... *Is* ..... he a teacher?
- 3 ..... *Are* ..... they dancers?
- 4 ..... *Am* ..... I a pilot?

- 5 ..... *Are* ..... you firefighters?
- 6 ..... *Is* ..... it a dog?
- 7 ..... *Is* ..... she a nurse?
- 8 ..... *Is* ..... it an apple?

## Short answers

**Am I/Are you** a pupil?

Yes, I am.

No, I'm not.

**Is he/she/it** big?

Yes, he/she/it is.

No, he/she/it isn't.

**Are we/you/they** pupils?

Yes, we/you/they are.

No, we/you/they aren't.

7 Answer the questions using short answers.



1 Is he 7?

No, he isn't.



2 Are they babies?

Yes, they are



3 Is he a firefighter?

Yes, he is



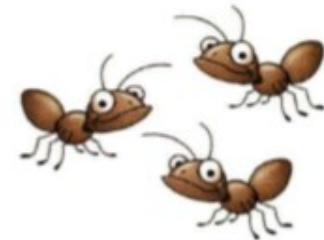
4 Is it a zebra?

No, it isn't.



5 Is she a singer?

Yes, she is.



6 Are they bees?

No, they aren't.

8

Answer the questions.



1 Are they mechanics?

No, they aren't.  
They're firefighters.



4 Are you bus drivers?

No, we aren't.  
We're singers.



2 Is he a postman?

No, he isn't.  
He's a pilot.



5 Are they tennis players?

No, they aren't.  
They're football players.



3 Is she a dancer?

No, she isn't.  
She's a singer.



6 Is it a flower?

No, it isn't.  
It's an ice cream.

6

## The verb 'to be'

9



Fill in: *am*, *is* or *are*. Listen and check.

I 1) ..... *am* Meena. I 2) ..... *am* 7. I 3) ..... *am* a pupil. Sunita 4) ..... *is*  
my mum. She 5) ..... *is* a teacher. Deepak 6) ..... *is* my dad. He 7) ..... *is*  
an engineer. Dev 8) ..... *is* my brother. He 9) ..... *is* a student. We  
10) ..... *are* a happy family!